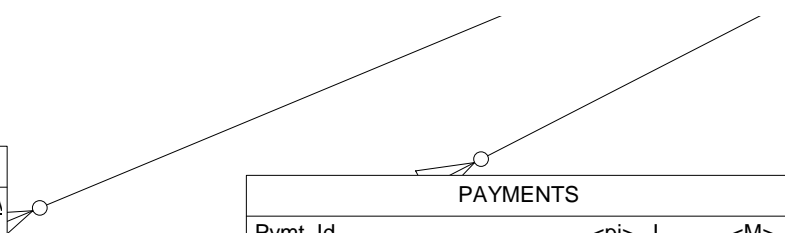


Schd Of Payments			
<u>Schd_Id</u>	<pi>	I	<M>
Schd_Pymt_Number		N3	
Schd_Pymt_Date		D	
Schd_Pymt_Amt		DC7,2	
Schd_Principal_Amt		DC7,2	
Schd_Interest_Amt		DC7,2	
Schd_Paid_Amt		DC7,2	
Schd_Schd_Balance_Amt		DC7,2	
Schd_Actual_Balance_Amt		DC7,2	
Schd_Acq_Fee_Amt		DC7,2	
Pymt_Late_Fee_Amt		DC7,2	
Pymt_Late_Fee_Pymt_Number		N3	
Schd_Updated_By		D_UPDATED_BY	
Schd_Updated_Date		D	
Key_1 <pi>			

PAYMENTS			
<u>Pymt_Id</u>	<pi>	I	<M>
Pymt_Number		N3	
Pymt_Posted_Date		D	
Pymt_Effective_Date		D	
Pymt_ACH_Trans_Status		A12	
Pymt_ACH_Trans_Id		A20	
Pymt_Amt		DC7,2	
Pymt_NSF_Fee		DC7,2	
Pymt_Reversal_Date		D	
Pymt__Reversed_Pymt_Number		N3	
Pymt_Check_Number		I	
Pymt_Desc		A30	
Pymt_Posted_By		I	
Pymt_updated_by		I	
Pymt_Updated_Date		D	
Key_1 <pi>			



Ins Agency			
<u>Ins_ID</u>	<pi>	!	<M>
Ins_Name		A60	
Ins_Street		A30	
Ins_st_Code		D_ST_CODE	
Ins_Apt_PO		A30	
Ins_City		A20	
Ins_State		D_STATE	
Ins_Zip		D_ZIP	
Ins_Phone		D_PHONE	
Ins_Phone_Ext		D_PHONE_EXT	
Ins_Fax		D_PHONE	
Ins_Agent_Name		A30	
Ins_Updated_By		D_UPDATED_BY	
Ins_Updated_Date		D	
Key_1	<pi>		

Ins_Policy			
<u>Inp_Id</u>	<pi>	!	<M>
Inp_Effective_Date		D	
Inp_Expiration_Date		D	
Inp_Cancelled_Date		D	
Inp_Verified_Date		D	
Inp_Policy_Number		A30	
Inp_Comp_Deduct_Amt		MN5,0	
Inp_Collision_Deduct_Amt		MN5,0	
Inp_Insured_Name		A30	
Inp_Updated_By		D_UPDATED_BY	
Inp_Updated_Date		D	
Identifier_1	<pi>		

Issued By

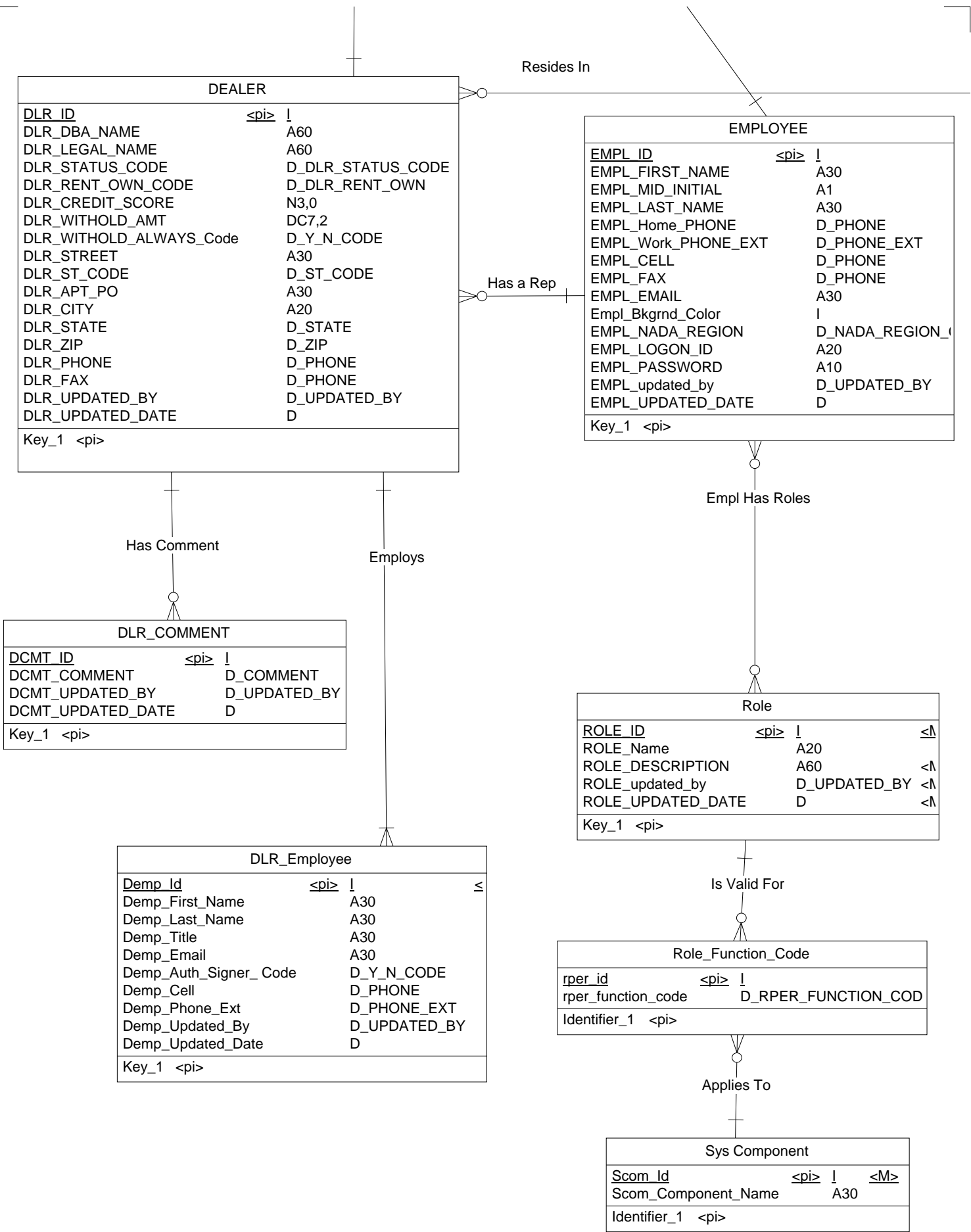
Bank			
<u>Bnk_ID</u>	<pi>	!	
Bnk_Routing_Number		N9	
Bnk_Name		A60	
Bnk_Branch		A30	
Bnk_Street		A30	
Bnk_St_Code		D_ST_CODE	
Bnk_City		A20	
Bnk_State		D_STATE	
Bnk_Zip		D_ZIP	
Bnk_Phone		D_PHONE	
Bnk_Fax		D_PHONE	
Bnk_Contact_Name		A30	
Bnk_Email		A30	
Bnk_Updated_By		D_UPDATED_BY	
Bnk_Updated_Date		D	
Key_1	<pi>		

Bank Account			
<u>Bact_ID</u>	<pi>	!	
Bact_Chk_Sav_Code		D_BACT_CHK_SAV	
Bact_ACH_Ind		D_Y_N_CODE	
Bact_Account_Number		A30	
Bact_Confirmed_By_Empl_Id		I	
Bact_Updated_By		D_UPDATED_BY	
Bact_Updated_Date		D	
Key_1	<pi>		

Held By

Warranty Co			
<u>Wrty_Id</u>	<pi>	!	<M>
Wrty_Company_Name		A60	
Wrty_Warranty_Name		A60	
Wrty_Street		A30	
Wrty_St_Code		D_ST_CODE	
Wrty_Apt_PO		A30	
Wrty_City		A20	
Wrty_State		D_ST_CODE	
Wrty_Zip		D_ZIP	
Wrty_Phone		D_PHONE	
Wrty_Fax		D_PHONE	
Wrty_Email		A30	
Wrty_Default_Wrty_Cost_Amt		DC7,2	
Wrty_Dlr_Check_Amt		DC7,2	
Wrty_Cut_Check_To_Dlr_Code		D_Y_N_CODE	
Wrty_Updated_By		D_UPDATED_BY	
Wrty_Updated_Date		D	
Key_1	<pi>		

Doc Checklist			
<u>Dchk_Id</u>	<pi>	!	<M>
Dchk_Approval_Wrksht_Code		D_Y_N_CODE	
Dchk_Registration_Code		D_Y_N_CODE	
Dchk_Rmv_Code		D_Y_N_CODE	
Dchk_Orig_Contract_Code		D_Y_N_CODE	
Dchk_Recourse_Sig_Code		D_Y_N_CODE	
Dchk_ACH_Signed_Code		D_Y_N_CODE	
Dchk_1st_Payment_Code		D_Y_N_CODE	
Dchk_Ext_Warranty_Code		D_Y_N_CODE	
Dchk_Orig_Credit_Appl_Code		D_Y_N_CODE	
Dchk_Ins_Binder_Code		D_Y_N_CODE	
Dchk_P_S_Agreement_Code		D_Y_N_CODE	
Dchk_30_60_90_Code		D_Y_N_CODE	
Dchk_Signed_Quest_Code		D_Y_N_CODE	
Dchk_Signed_Co_Borrow_Code		D_Y_N_CODE	
Dchk_Title_Code		D_Y_N_CODE	
Dchk_Dlr_Reg_Fee_Form_Code		D_Y_N_CODE	
Dchk_Keys_Code		D_Y_N_CODE	
Dchk_Drivers_License_Code		D_Y_N_CODE	
Dchk_References_Code		D_Y_N_CODE	
Dchk_Pay_Stubs_Code		D_Y_N_CODE	
Dchk_Utility_Bill_Code		D_Y_N_CODE	
Dchk_Int_License_Code		D_Y_N_CODE	
Identifier_1	<pi>		



DEALER	
<u>DLR_ID</u>	<pi> !
DLR_DBA_NAME	A60
DLR_LEGAL_NAME	A60
DLR_STATUS_CODE	D_DLR_STATUS_CODE
DLR_RENT_OWN_CODE	D_DLR_RENT_OWN
DLR_CREDIT_SCORE	N3,0
DLR_WITHOLD_AMT	DC7,2
DLR_WITHOLD_ALWAYS_Code	D_Y_N_CODE
DLR_STREET	A30
DLR_ST_CODE	D_ST_CODE
DLR_APT_PO	A30
DLR_CITY	A20
DLR_STATE	D_STATE
DLR_ZIP	D_ZIP
DLR_PHONE	D_PHONE
DLR_FAX	D_PHONE
DLR_UPDATED_BY	D_UPDATED_BY
DLR_UPDATED_DATE	D
Key_1 <pi>	

EMPLOYEE	
<u>EMPL_ID</u>	<pi> !
EMPL_FIRST_NAME	A30
EMPL_MID_INITIAL	A1
EMPL_LAST_NAME	A30
EMPL_Home_PHONE	D_PHONE
EMPL_Work_PHONE_EXT	D_PHONE_EXT
EMPL_CELL	D_PHONE
EMPL_FAX	D_PHONE
EMPL_EMAIL	A30
Empl_Bkgrnd_Color	I
EMPL_NADA_REGION	D_NADA_REGION
EMPL_LOGON_ID	A20
EMPL_PASSWORD	A10
EMPL_updated_by	D_UPDATED_BY
EMPL_UPDATED_DATE	D
Key_1 <pi>	

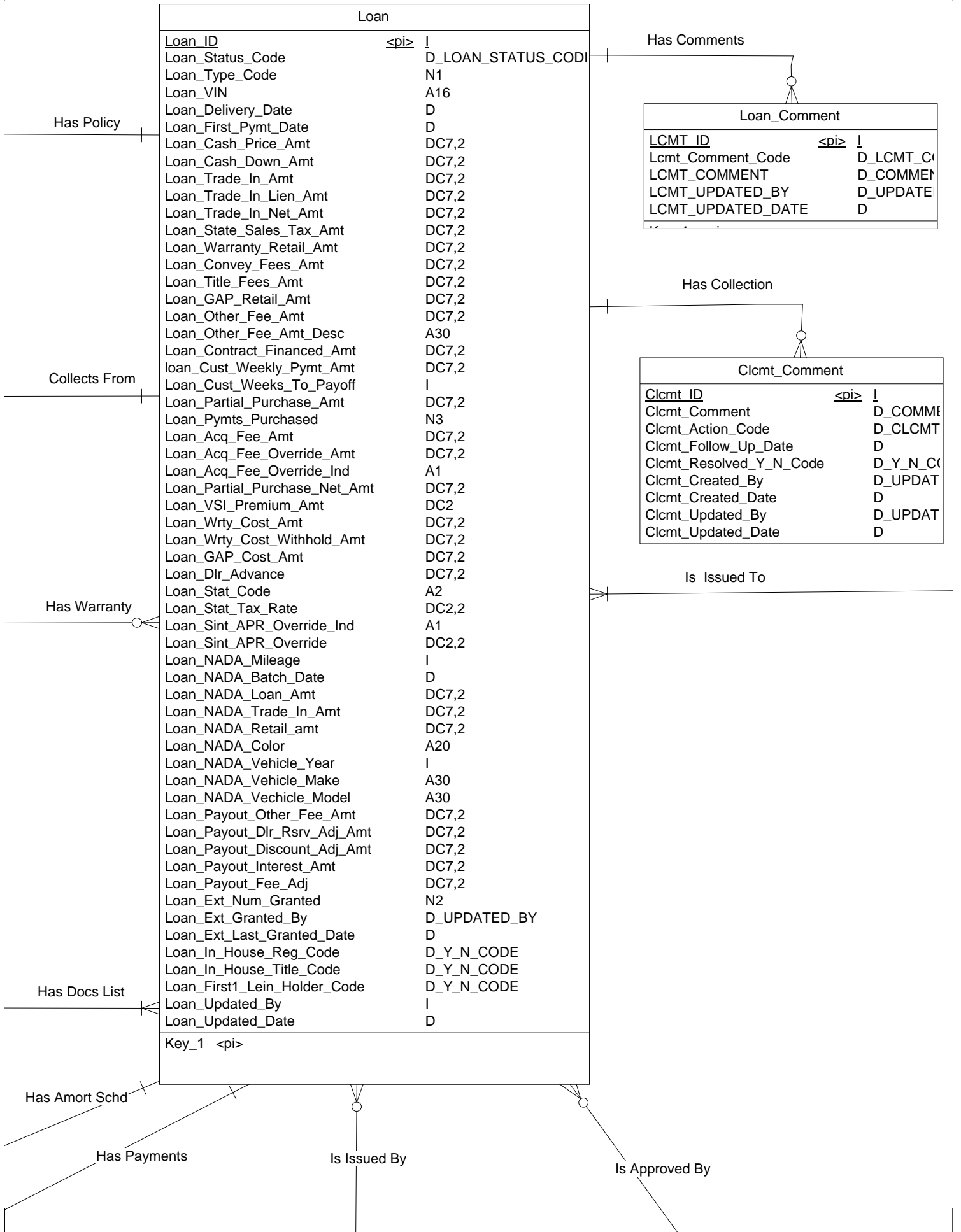
DLR_COMMENT	
<u>DCMT_ID</u>	<pi> !
DCMT_COMMENT	D_COMMENT
DCMT_UPDATED_BY	D_UPDATED_BY
DCMT_UPDATED_DATE	D
Key_1 <pi>	

DLR_Employee	
<u>Demp_Id</u>	<pi> !
Demp_First_Name	A30
Demp_Last_Name	A30
Demp_Title	A30
Demp_Email	A30
Demp_Auth_Signer_Code	D_Y_N_CODE
Demp_Cell	D_PHONE
Demp_Phone_Ext	D_PHONE_EXT
Demp_Updated_By	D_UPDATED_BY
Demp_Updated_Date	D
Key_1 <pi>	

Role	
<u>ROLE_ID</u>	<pi> !
ROLE_Name	A20
ROLE_DESCRIPTION	A60
ROLE_updated_by	D_UPDATED_BY
ROLE_UPDATED_DATE	D
Key_1 <pi>	

Role_Function_Code	
<u>rper_id</u>	<pi> !
rper_function_code	D_RPER_FUNCTION_COD
Identifier_1 <pi>	

Sys Component	
<u>Scom_Id</u>	<pi> !
Scom_Component_Name	A30
Identifier_1 <pi>	



STATE			
<u>Stat_Id</u>	<pi>	I	<M>
Stat_Abbr		A2	
Stat_Number		DC2,0	
Stat_Name		A30	
Stat_NADA_Region		D_NADA_REGION_CODE	
Stat_NSF_Check_Fee		DC2	
Stat_NSF_Check_Fee_Pct		DC4,4	
Stat_Tax_Rate		DC4,4	
Stat_Late_Fee_Pct		DC2,2	
Stat_VSI_Premium		DC3	
Stat_Max_GAP_Retail		DC3	
Stat_GAP_Cost		DC3	
Stat_Max_Conveyance_Fee		DC3	
Stat_Pct_Not_Paid_B4_Overdue		DC2,2	
Stat_Updated_By		D_UPDATED_BY	
Stat_Updated_Date		D	
Key_1 <pi>			

Has Rates

An Acq Fees

STATE_INT_RATES			
<u>Sint_Id</u>	<pi>	I	<M>
Sint_Start_Year		DC4,0	
Sint_End_Year		DC4,0	
Sint_Default_APR		DC4,2	
Sint_updated_by		D_UPDATED_BY	
Sint_Updated_Date		D	
Key_1 <pi>			

STATE_ACQ_FEES			
<u>Staf_Id</u>	<pi>	I	<M>
Staf_Start_Week		I	
Staf_End_Week		I	
Staf_Acq_Fee_Amt		DC6,2	
Staf_Updated_By		I	
Staf_Updated_Date		D	
Key_1 <pi>			

Sys Info			
<u>Sys_Id</u>	<pi>	I	<M>
Sys_Name		A30	
Sys_Street_1		A30	
Sys_Street_2		A30	
Sys_City		A20	
Sys_State		D_STATE	
Sys_Zip		D_ZIP	
Sys_Phone		D_PHONE	
Sys_Fax		D_PHONE	
Sys_Toll_Free_Phone		D_PHONE	
Sys_NADA_Userid		A12	
Sys_NADA_Password		A12	
Sys_ACH_Userid		A12	
Sys_ACH_Password		A12	
Sys_Email		A30	
Sys_Next_Check_Number		I	
Sys_Max_Weeks_For_Loan_Term		N3	
Sys_Days_Alwd_Before_1st_Pymt		N2	
Sys_Min_ACQ_Fee		N3	
Sys_Dealer_Comment		D_COMMENT	
Sys_Updated_By		D_UPDATED_BY	
Sys_Updated_Date		D	
Key_1 <pi>			

CUST_REFERENCE			
<u>CREF_ID</u>	<pi>	!	<M>
CREF_FIRST_NAME	A30		
CREF_MID_INITIAL	A1		
CREF_LAST_NAME	A30		
CREF_EMAIL	A30		
CREF_STREET	A30		
CREF_ST_CODE	D_ST_CODE		
CREF_APT_PO	A30		
CREF_CITY	A20		
CREF_STATE	D_STATE		
CREF_ZIP	D_ZIP		
CREF_PHONE	D_PHONE		
CREF_PHONE_EXT	D_PHONE_EXT		
CREF_FAX	D_PHONE		
Cref_Confirmed_Code	D_Y_N_CODE		
CREF_UPDATED_BY	D_UPDATED_BY		
CREF_UPDATED_DATE	D		
Key_1 <pi>			

MRTG_LANDLORD			
<u>MRTG_ID</u>	<pi>	!	<M>
MRTG_HOLDER_NAME	A60		
MRTG_STREET	A30		
MRTG_ST_CODE	D_ST_CODE		
MRTG_APT_PO	A30		
MRTG_CITY	A20		
MRTG_STATE	D_STATE		
MRTG_ZIP	D_ZIP		
MRTG_PHONE	D_PHONE		
MRTG_FAX	D_PHONE		
MRTG_EMAIL	A30		
MRTG_MONTHLY_PAYMENT	DC7,2		
MRTG_UPDATED_BY	D_UPDATED_BY		
MRTG_UPDATED_DATE	D		
Key_1 <pi>			

CUSTOMER			
<u>CUST_ID</u>	<pi>	!	
CUST_FIRST_NAME	A30		
CUST_MID_INITIAL	A1		
CUST_LAST_NAME	A30		
CUST_SSN	D_SSN		
CUST_GENDER	D_GENDER_CODE		
CUST_MARITAL_STATUS	D_MARITAL_STATUS		
CUST_DOB	D		
Cust_Previous_Repo_Code	D_Y_N_CODE		
CUST_NUM_DEPENDENTS	N2		
CUST_UPDATED_BY	D_UPDATED_BY		
CUST_UPDATED_DATE	D		
P_IDENTIFIER_1 <pi>			

CUST_ADDRESS			
<u>CADR_ID</u>	<pi>	!	
CADR_MOVIN_IN_DATE	D		
CADR_STREET	A30		
CADR_ST_CODE	D_ST_CODE		
CADR_APT_PO	A30		
CADR_CITY	A20		
CADR_STATE	D_STATE		
CADR_ZIP	D_ZIP		
CADR_HOME_PHONE	D_PHONE		
CADR_CELL_PHONE	D_PHONE		
CADR_FAX_PHONE	D_PHONE		
CADR_WORK_PHONE	D_PHONE		
cadr_EMAIL_ADDRESS	A30		
CADR_WORK_EXT	D_PHONE_E		
CADR_OTHER_PHONE	D_PHONE		
CADR_OTHER_PHONE_DESC	A30		
CADR_RENT_OWN_CODE	D_CADR_RE		
cadr_confirmed_code	D_Y_N_COD		
CADR_UPDATED_BY	D_UPDATED		
CADR_UPDATED_DATE	D		
Key_1 <pi>			

CUST_COMMENT			
<u>CCMT_ID</u>	<pi>	!	<M>
CCMT_COMMENT	D_COMMENT		
CCMT_UPDATED_BY	D_UPDATED_BY		
CCMT_UPDATED_DATE	D		
Key_1 <pi>			

CUST_EMPLOYER			
CEMP_NAME	A60		
<u>CEMP_ID</u>	<pi>	!	<M>
CEMP_JOB_POSITION	A30		
CEMP_SALARY	DC7,2		
CEMP_OTHER_INCOME	DC7,2		
CEMP_EMAIL	A30		
CEMP_STREET	A30		
CEMP_ST_CODE	D_ST_CODE		
CEMP_APT_PO	A30		
CEMP_CITY	A20		
CEMP_STATE	D_STATE		
CEMP_ZIP	D_ZIP		
CEMP_PHONE	D_PHONE		
CEMP_PHONE_EXT	D_PHONE_EXT		
CEMP_FAX	D_PHONE		
CEMP_CONFIRMED_CODE	D_Y_N_CODE		
CEMP_UPDATED_BY	D_UPDATED_BY		
CEMP_UPDATED_DATE	D		
Key_1 <pi>			

Provides

Is Owned By

Has Historical

Has Comments

Is Employed By